

## AFTER THE EXAM




Your CT will be reviewed by the radiologist, who will forward the results to your physician. Your healthcare provider, in turn, will discuss the results with you. He may recommend further testing, or suggest a treatment plan for your condition. Make sure you have a clear understanding of your test results and their impact of your health. If you have questions, feel free to ask your healthcare provider.

Mr.  Ms.  Mrs.

\_\_\_\_\_ has an appointment

Monday  Tuesday  Wednesday  
 Thursday  Friday  Saturday

Date \_\_\_\_\_ at \_\_\_\_\_ AM/PM

 **PROVENA**  
Saint Joseph Medical Center  
333 North Madison • Joliet, IL 60435  
(815) 741-7213

## POTENTIAL SITES OF A CT SCAN

### BRAIN

### SINUS

### INNER EAR

### CHEST

### SPINE

### ABDOMEN AND PELVIS

liver, pancreas, kidney, stomach, intestines, blood vessels, bones

# CT Scan

## COMPUTED TOMOGRAPHY SCAN

What you need to know...

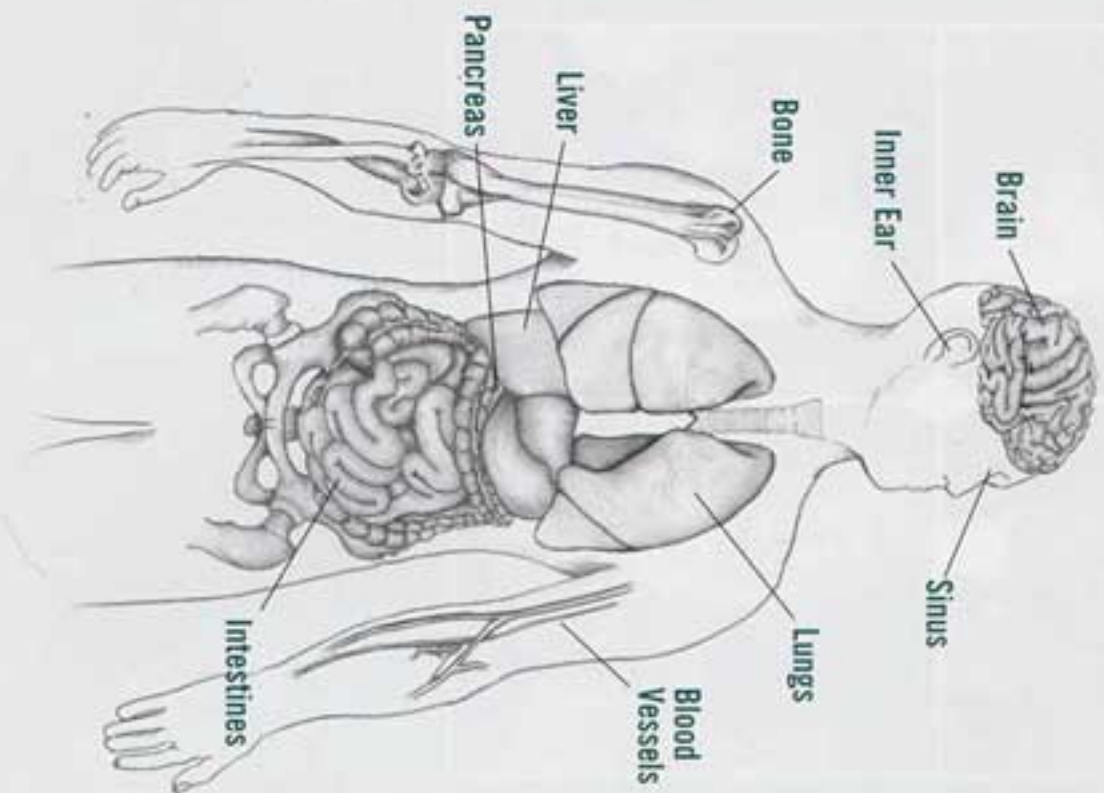


 **PROVENA**  
Saint Joseph Medical Center

## WHAT IS A CT SCAN AND WHY IS IT PERFORMED?



**CT** Scan is short for Computed Tomography, an advanced technology system that studies the inner organs of your body. It is particularly helpful in diagnosing and monitoring diseases of the central nervous system (brain & spine), as well as the chest and abdomen. CT scans are performed to analyze the internal structure-of various parts of the body. CT is also used to visualize pathology and fractures of bone structures in the body.



SITES OF A POSSIBLE CT SCAN

## HOW DOES A PATIENT PREPARE FOR CT SCANNING

### AND HOW IS IT PERFORMED?

In preparation for a CT scan, patients are often asked to avoid food up to eight hours prior to their test. Please note that if you are taking any medication, you should continue it normally. Contrast material may be injected intravenously, administered by mouth or rectally in order to increase the distinction between various organs or areas of the body. All, metallic materials and certain clothing around the body are removed because they can interfere with the clarity of the images.

**If you are known to be allergic to Iodine contrast, please advise the technologist.**

Patients are placed on a movable table and the table is slipped into the center of a large donut-shaped machine, which takes the images around the body. If IV contrast is to be used, this is when the technologist will start an IV on you. The CT scan technologist tells the patient when to breathe or hold his/her breath during scans of the chest and abdomen. If any problems are experienced during the CT scan, the technologist should be informed immediately. The technologist watches the patient through an observation window during the procedure and there is an intercom system in the room for additional patient safety. The actual procedure can take anywhere from 10 to 30 minutes depending on the test. The technologist can tell you how long your study will take.

Once the scan is complete the CT technologist will allow the patient to leave and go about normal activities without restriction. If you received a contrast agent during the test, it is suggested that you drink an additional 1-2 glasses of water.

**Let the radiologist or technologist know if you are, or suspect you might be pregnant.**

## DURING THE EXAM



**A**fter changing into a gown, you will be asked to lie on the examining table, usually on your back. The movable table will be raised, lowered and moved in and out of the scanner opening. The area of your body being examined will remain inside the scanner. It is very important that you remain still when the images are being taken, so that the pictures are clear. An intercom will permit you to talk to the technologist.

You will hear a variety of whirring, clicking and other machine-like noises during the examination. While your CT Scan is being checked for clarity, you may be asked to wait. If additional images are needed, they will be taken at that time.

