

PREPARING FOR YOUR INTRAVENOUS PYELOGRAM

Preparation for this exam is extensive, usually taking a whole day or two before your appointment. Your healthcare provider will provide specific instructions, depending on your case. Generally, patients are asked to drink large quantities of water and follow a special diet. To be sure the bowel is completely clean, your healthcare provider may also order an enema or laxatives. It is very important to follow your healthcare provider's instructions carefully.

Be sure to provide your complete medical history, including medicines you currently take, previous reactions to medicines or contrast agents.

Let the radiologist or technologist know if you are, or suspect you might be, pregnant.


The exam usually takes about an hour. To be sure, ask your healthcare provider's office how long the exam will take.

Mr. Ms. Mrs.

_____ has an appointment

Monday Tuesday Wednesday
 Thursday Friday Saturday

Date _____ at _____ AM/PM

 **PROVENA**
Saint Joseph Medical Center
333 North Madison • Joliet, IL 60435
(815) 741-7213

REASONS TO HAVE AN INTRAVENOUS PYELOGRAM

Your healthcare provider has asked you to have this exam to evaluate your urinary tract. Several of the most common reasons to undergo this test are:

- ❖ Pain
- ❖ Blood in the urine
- ❖ Urinary tract infections
- ❖ Difficulty with urination

WHAT CAN AN IVP EXAM TELL MY HEALTHCARE PROVIDER?

Among the many conditions that may be diagnosed from an IVP exam are:

- ❖ Stones
- ❖ Enlarged Prostate
- ❖ Injuries
- ❖ Tumors

IVP's are sometimes obtained prior to pelvic surgery in order to visualize the urinary system. This is only a partial list and your healthcare provider may have a more specific reason for ordering this test for you. Please consult your healthcare provider if you have specific questions as to why this test was ordered.

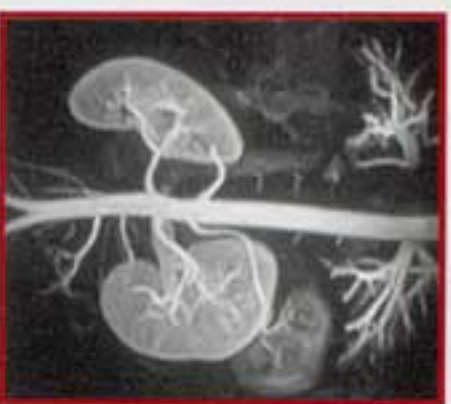
Intravenous Pyelogram

What you need to know....



 **PROVENA**
Saint Joseph Medical Center

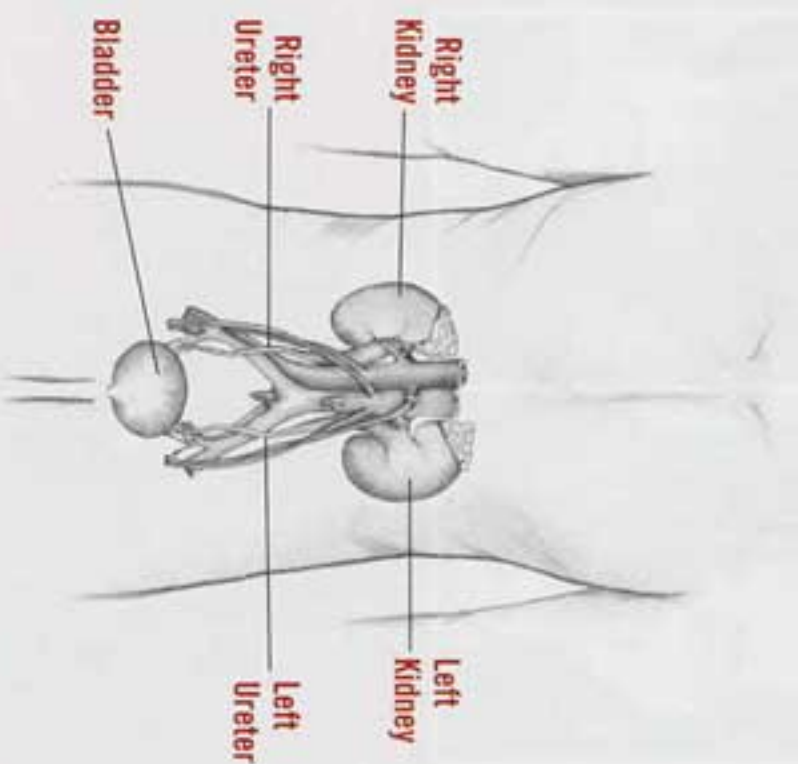
WHAT IS AN INTRAVENOUS PYELOGRAM?



x-ray

An Intravenous Pyelogram (IVP) is a special x-ray of the urinary tract, which includes the kidneys, ureters and bladder. Because standard x-rays detect only bony structures of the body, a special dye (or contrast agent) is given intravenously to outline the image of soft tissues.

As the contrast medium travels through the bloodstream, it passes through the kidneys, ureters, and bladder, making it possible to make permanent x-ray images of these organs.



SITES OF POSSIBLE INTRAVENOUS PYELOGRAM

DURING THE EXAM

After changing into a gown, you will be asked to lie on an x-ray table in the examination room. The technologist or radiologist may ask a few simple questions before the exam begins, and a preliminary x-ray may be taken.

Next, the contrast medium will be injected into a vein in your arm. The medication may cause you to feel warm, and some patients say it leaves an odd metallic taste in their mouths. Fortunately, these conditions are normal and do not last long. Abnormal reactions may include itching and shortness of breath. Let the technologist or radiologist know if you are uncomfortable in any way, even if you think it may be normal.

After the dye is well on its way through your system, you will be asked to change positions and hold very still as the x-rays are taken. You may even be asked to hold your breath, and the examiner may briefly apply pressure to your abdomen. Some exams require x-rays of a full bladder as well as an empty one, so you may be asked to empty your bladder in the course of the x-ray series.

After all the x-rays have been taken you will be asked to wait as the technologist checks the images for clarity. If more x-rays are needed, they will be taken at that time.

On occasion, you may be asked to return sometime later for a delayed follow-up x-ray picture.

AFTER THE EXAM

Your x-rays will be reviewed by the radiologist, who will forward the results to your healthcare provider who, in turn, will discuss the results with you. Your healthcare provider may recommend further testing or suggest a treatment plan for your condition. Make sure you have a clear understanding of your test results and their impact on your health. If you have questions, feel free to ask your healthcare provider.

Most patients are able to return to normal diet and activities immediately following the test. The contrast agent is naturally eliminated from your system and should not discolor stools or urine.

